



Order by Phone
1-866-8-AIR-TEC

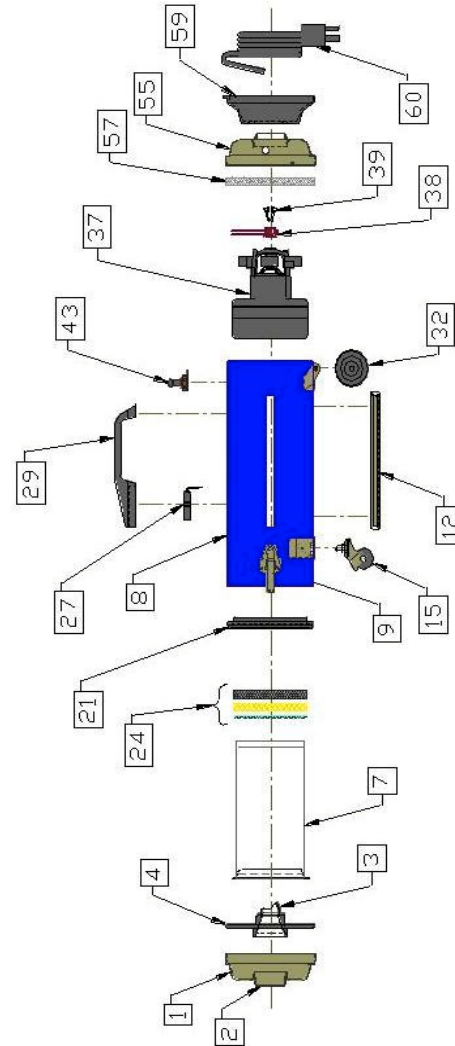


Order by Fax
1-978-345-5255

BK2000-DIAGRAM OF MAIN PARTS

Air·Tec

2003 Parts Catalogue



#	PART ID	DESCRIPTION
1	BK1002	Front bell assembly
2	BK1003	Front bell insert
3	BK1004	Air velocity enhancer
4	BK1005	AVE gasket
7	AT1051	AlleRx bag
8	BK1009	Outer shell assembly
9	BK1011	Front-end clamp
12	BK1014	Shell bumper
15	BK1018	Front wheel (caster)
21	BK1024	Front shell ring
27	BK1031	Handle electr. plug
29	BK1089	Handle
32	BK1090	Rear wheel
37	BK1041	Motor assembly
38	BK1043	Heat sensor assembly
39	BK1045	Cable tie - 8" long
43	BK1049	Switch assembly
55	BK1064	Rear bell assembly
57	BK1067	Rear bell gasket
59	BK1069	Cord halo
60	BK1070	Power cord w/plug

Table of Contents

	Page
1. BK2000 – Diagram of Main Parts	2
2. BK Replacements Parts	3,4
3. Power Nozzles Parts	5
4. Attachment Tools Parts	6

BK - REPLACEMENT PARTS

PART ID	PART DESCRIPTION	UNIT PRICE
BK1004	AIR VELOCITY ENHANCER	
BK1005	AIR VELOCITY ENHANCER GASKET LRG	
BK1006	AIR VELOCITY ENHANCER GASKET SML	
AT1051C	BAG - ALLERX BAG CASE (15 PACKS)	
AT1051P	BAG - ALLERX BAG PACK (8 BAGS)	
AT1053C	BAG - MELTBLOWN BAG CASE (15 PACKS)	
AT1053P	BAG - MELTBLOWN BAG PACK (8 BAGS)	
BK1002	BELL - FRONT BELL (CHROME)	
BK1002G	BELL - FRONT BELL (GOLD)	
BK1001	BELL - FRONT BELL ASSEMBLY (CHROME)	
BK1001G	BELL - FRONT BELL ASSEMBLY (GOLD)	
BK1065	BELL - REAR BELL (CHROME)	
BK1065G	BELL - REAR BELL (GOLD)	
BK1064	BELL - REAR BELL ASSEMBLY (CHROME)	
BK1064G	BELL - REAR BELL ASSEMBLY (GOLD)	
BK1011	CLAMP - FRONT END CLAMP (CHROME)	
BK1011G	CLAMP - FRONT END CLAMP (GOLD)	
BK1069	CORD - HALO	
BK1070	CORD - POWER CORD W/ PLUG	
BK1089G	HANDLE - DELUXE ASSEMBLY	
BK1089	HANDLE - STANDARD ASSEMBLY	
BK1031	HANDLE - ELECTRIC PLUG	
BK1032	HANDLE - FRONT SCREW	
BK1085	HANDLE - PAD GRIP	
BK1034	HANDLE - REAR SCREW	
BK1035	HANDLE - SHELL GASKET	
BK1043	HEAT SENSOR ASSEMBLY	
BK1200	HOSE - 6 FT PKGE	
BK1201	HOSE - 6 FT HOSE ONLY COLOR: BLACK	
BK1210	HOSE - 9 FT PKGE	
BK1211	HOSE - 9 FT HOSE ONLY	
BK1202	HOSE - ATTACHMENT HOSE END	
BK1203	HOSE - MACHINE HOSE END	
BK1206	HOSE - MACHINE HOSE END GASKET	
BK1205	HOSE - PIG TAIL MACHINE END	
BK1041	MOTOR - ASSEMBLY	
BK1060	MOTOR - BUMPER	
AT1603	MOTOR - CARBON BRUSH	
AT1601	MOTOR - IMPELLOR	
BK1048	MOTOR - MOUNTING GASKET	
AT1602	MOTOR - STATIONARY FAN	
AT1600	MOTOR - TOP FAN SHELL	
BK1009G	SHELL ASSEMBLY (BLUE)	
BK1009	SHELL ASSEMBLY (GREEN)	
BK1014G	SHELL BUMPER (BLUE)	
BK1014	SHELL BUMPER (GREEN)	
BK1049	SWITCH ASSEMBLY	

BK - REPLACEMENT PARTS

PART ID	PART DESCRIPTION	UNIT PRICE
SG1005	WAND - SWEEP&GROOM P.N. WAND	
DG1002	WAND - STANDARD P.N. WAND	
AT1101	WAND - AIR TEC LOWER WAND	
AT1102	WAND - AIR TEC UPPER WAND	
BK1018	WHEEL - FRONT (CHROME)	
BK1018G	WHEEL - FRONT (GOLD)	
BK1016	WHEEL - FRONT BRACKET (CHROME)	
BK1016G	WHEEL - FRONT BRACKET (GOLD)	
BK1090	WHEEL - REAR WHEEL ASSY	
BK1090G	WHEEL - REAR WHEEL ASSY (GOLD)	
BK1040	WHEEL - REAR AXLE NUT	
BK1038	WHEEL - REAR AXLE SCREW (CHROME)	
BK1038G	WHEEL - REAR AXLE SCREW (GOLD)	
BK1037	WHEEL - REAR AXLE SLEVE	
BK1039	WHEEL - REAR AXLE WASHER	
BK1012	WHEEL - REAR BRACKET (CHROME)	
BK1012G	WHEEL - REAR BRACKET (GOLD)	



POWER NOZZLES - PARTS

PART ID	PART DESCRIPTION	UNIT PRICE
DG1010	STANDARD POWER NOZZLE W/WANDS	
DG1013	STANDARD P.N. BELT	
DG1021	STANDARD P.N. BLACK HEAD W/SWITCH	
DG1011	STANDARD P.N. BRUSH ROLL	
DG1014	STANDARD P.N. ELBOW ASSY.	
DG1012	STANDARD P.N. LOWER HOUSING PLATE	
DG1018	STANDARD P.N. MOTOR	
DG1015	STANDARD P.N. RETAINER	
DG1020	STANDARD P.N. ROCKER SWITCH	
DG1019	STANDARD P.N. UPPER HOUSING	
DG1002	STANDARD P.N. WAND	
DG1016	STANDARD P.N. WHEEL	
DG1017	STANDARD P.N. WHEEL AXLE	
SG1000	SWEEP&GROOM - POWER NOZZLE W/WANDS	
SG1002	SWEEP&GROOM - PIGTAIL EXTENSION	
SG1005	SWEEP&GROOM - WAND (UPPER AND LOWER)	
SG1010	SWEEP&GROOM - BELT	
SG1011	SWEEP&GROOM - BOTTOM HOUSING	
SG1012	SWEEP&GROOM - BRUSH ASSEMBLY	
SG1013	SWEEP&GROOM - BRUSH REFILL (4 PER PACK)	
SG1014	SWEEP&GROOM - MOTOR NEW STYLE	
SG1015	SWEEP&GROOM - MOTOR REG. STYLE	
SG1016	SWEEP&GROOM - NECK ASSEMBLY	
SG1017	SWEEP&GROOM - REAR WHEEL	
SG1018	SWEEP&GROOM - SWITCH	
SG1019	SWEEP&GROOM - SWITCH PEDAL	
SG1020	SWEEP&GROOM - TOP HOUSING	
WW1010	CLASSIC POWER NOZZLE W/WANDS	
WW1018	CLASSIC P.N. BALLAST 120V	
WW1020	CLASSIC P.N. BASE	
WW1022	CLASSIC P.N. BELT	
WW1017	CLASSIC P.N. BRUSH ROLL	
WW1011	CLASSIC P.N. CORD	
WW1013	CLASSIC P.N. COVER W/T LIGHT	
WW1023	CLASSIC P.N. LIGHT KIT	
WW1025	CLASSIC P.N. MICRO SWITCH	
WW1028	CLASSIC P.N. MOTOR	
WW1021	CLASSIC P.N. NECK	
WW1012	CLASSIC P.N. STRAIN RELIEF	

ATTACHMENTS TOOLS - PARTS

PART ID	PART DESCRIPTION	UNIT PRICE
AT1051C	BAG - ALLERX BAG CASE (15 PACKS)	
AT1051P	BAG - ALLERX BAG PACK (8 BAGS)	
AT1053C	BAG - MELTBLOWN BAG CASE (15 PACKS)	
AT1053P	BAG - MELTBLOWN BAG PACK (8 BAGS)	
AT1049	CREVICE TOOL	
AT1055	DUST TOOL - ROUND BRUSH	
AT1045	DUST TOOL - VEE BRUSH TOOL	
AT1047	DUST TOOL - VEE BRUSH BRISTLES	
AT1046	DUST TOOL - VEE BRUSH HOLDER	
BK1259	FILTER - SANITIZER FILTER PKGE	
BK1027S	FILTER - BK FILTER SET	
AT1034	FLOOR POLISHER	
AT1039	FLOOR POLISHER - FELT PAD ONLY	
AT1001	FLOOR TOOL ASSEMBLY	
AT1003	FLOOR TOOL LOCKING LEVER	
AT1005	FLOOR TOOL LOCKING LEVER PIN	
AT1004	FLOOR TOOL LOCKING LEVER SPRING	
AT1008	FLOOR TOOL BUMPER	
AT1002	FLOOR TOOL CASTING - FINISHED PART	
AT1007	FLOOR TOOL PLATE SCREW	
AT1006	FLOOR TOOL PLATE W/ BRUSH	
BK1220	METAL TOOL CARRIER PKGE (BLUE)	
BK1215	METAL TOOL CARRIER PKGE (GREEN)	
AT1020	RUG TOOL ASSEMBLY	
AT1022	RUG TOOL BOTTOM PLATE CASTING	
AT1031	RUG TOOL BRUSH ASSEMBLY	
AT1028	RUG TOOL BRUSH CAM	
AT1027	RUG TOOL BRUSH SPRING	
AT1030	RUG TOOL BUMPER	
AT1021	RUG TOOL CASTING	
AT1029	RUG TOOL PLATE SCREW	
AT1023	RUG TOOL ROLLER	
AT1024	RUG TOOL ROLLER AXLE	
AT1003	RUG TOOL LOCKING LEVER	
AT1005	RUG TOOL LOCKING LEVER PIN	
AT1004	RUG TOOL LOCKING LEVER SPRING	
AT1040	UPHOLSTERY TOOL ASSEMBLY	
AT1042	UPHOLSTERY TOOL BOTTOM	
AT1043	UPHOLSTERY TOOL SCREW	
AT1041	UPHOLSTERY TOOL TOP	